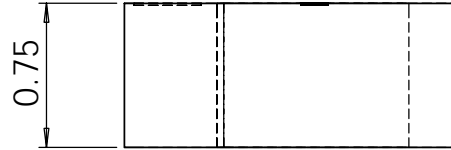
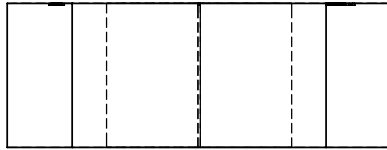


REVISIONS				
ZONE	REV.	DESCRIPTION	DATE	APPROVED
	C	Added label and chamfer note	5/26/05	AO
	D	Modified tapped hole callout	12/5/05	AO
	E	Added serial # engraving & note to use lathe for thread	7/6/06	AO

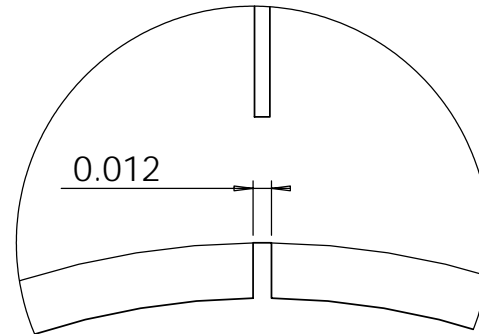
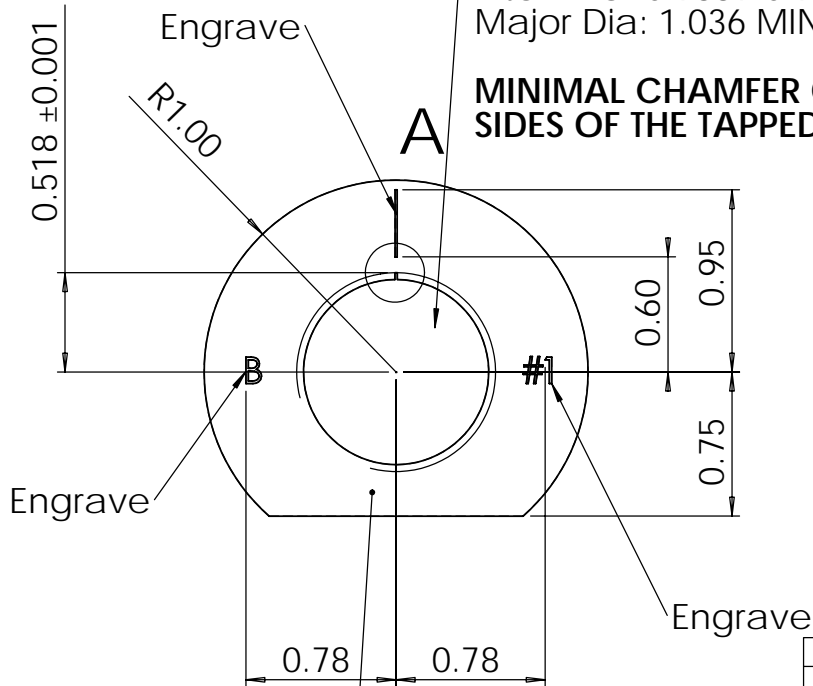


SINGLE POINT TURN ID AND
THREAD! DO NOT USE THREADMILL!

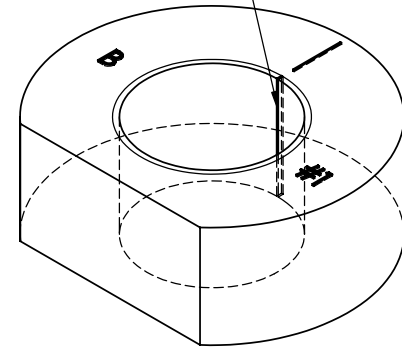
Tap 0.75-14NPSM-2B
Minor Dia: 0.958-0.970
Pitch Dia: 0.9889-0.9958
Major Dia: 1.036 MINIMUM

CUT NOTCH 0.12" WIDE x 0.036" DEEP
MUST BE BURR FREE, USE EDM. A GO
THREAD GAGE MUST ROTATE SMOOTHLY
FULL LENGTH OF THREAD.

MINIMAL CHAMFER ON BOTH
SIDES OF THE TAPPED HOLE!



A (8 : 1)



Engrave serial #

PROPRIETARY AND CONFIDENTIAL
THE INFORMATION CONTAINED IN THIS
DRAWING IS THE SOLE PROPERTY OF
MCU DESIGNS. ANY REPRODUCTION
IN PART OR AS A WHOLE WITHOUT THE
WRITTEN PERMISSION OF MCU DESIGNS
IS PROHIBITED.

		DIMENSIONS ARE IN INCHES TOLERANCES: FRACTIONAL ±1/32 ANGULAR: MACH ± BEND ± TWO PLACE DECIMAL ±0.02 THREE PLACE DECIMAL ±0.003		NAME AO	DATE 3/16/05	MCU Designs VP Calibration Standard SCUBA #1
		MATERIAL 6061 Aluminum		CHECKED		
		FINISH Anodize Black		ENG APPR.		
NEXT ASSY	USED ON			MFG APPR.		
APPLICATION		DO NOT SCALE DRAWING		Q.A.		
				COMMENTS: BREAK ALL EXTERNAL SHARP EDGES UNLESS NOTED. ENGRAVING FONT IS NOT IMPORANT. USE 1/16" BALL END MILL, 0.01" DEEP.		SIZE A
				DWG. NO. VP-3000		REV. E
				SCALE:1:1	WEIGHT:	SHEET 1 OF 1